

# DATA AND TECHNOLOGY WORKSHOP

**Erwin Teitler**  
Manager Digital Solutions

**Neil Milvain**  
IP Director

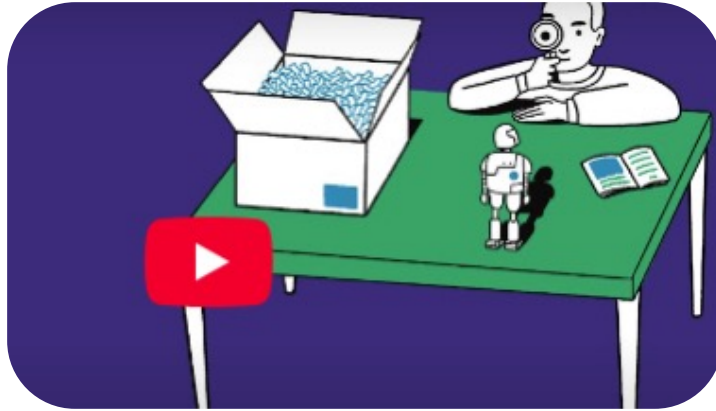
22 May 2025





# WHAT EXACTLY IS AI?

---



[Let's watch a two-minute video](#)



# TABLE TALK TIME

---

What key elements should an AI policy contain?

Open the **Yellenge app** on your phone.

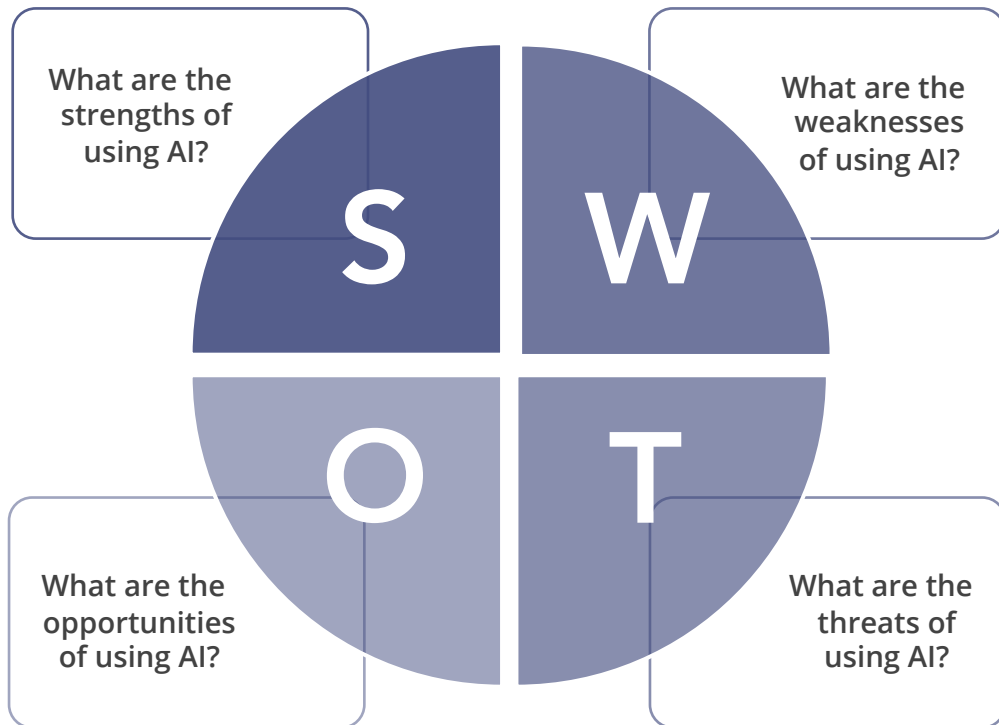
Discuss the multiple-choice options with your table.

Choose **at least 3 answers** from the multiple options and submit them in Yellenge.

**Table Talk Instructions**

# TABLE TALK TIME

---



Each table has one SWOT letter (S, W, O, or T).

Discuss it as a group.

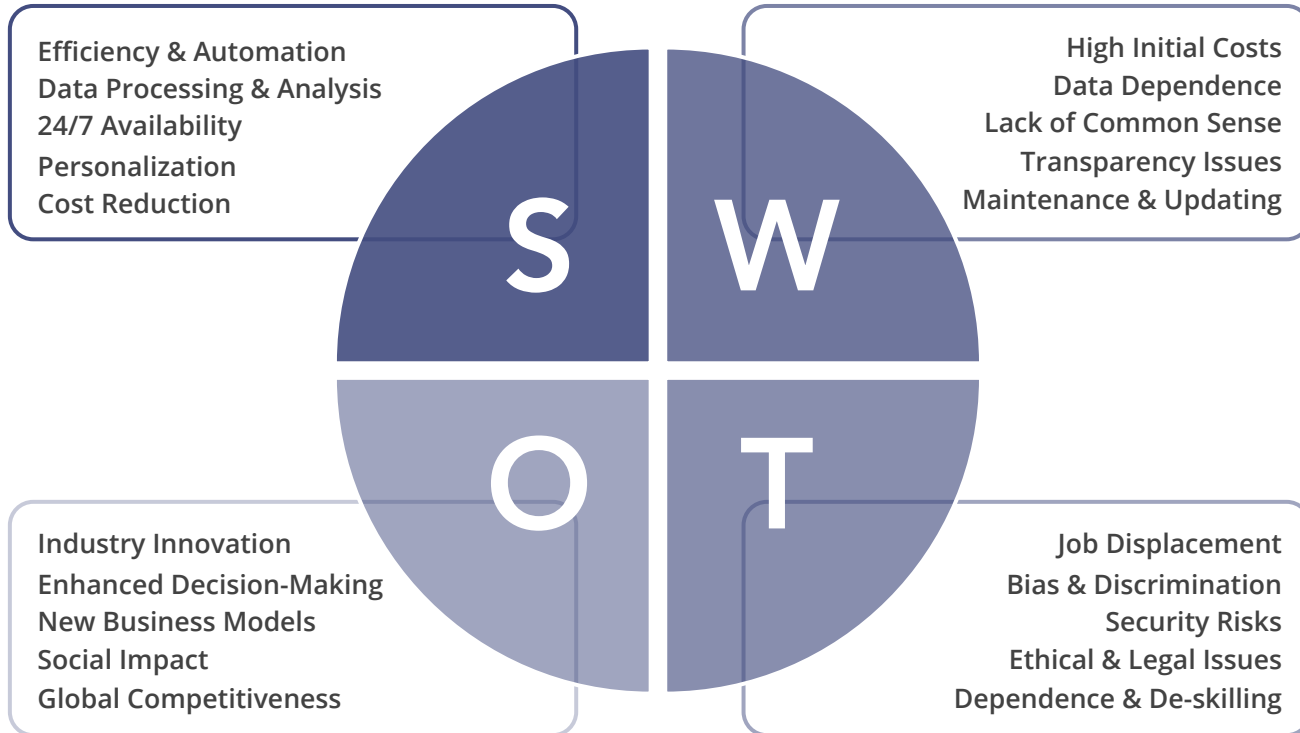
Your **FSSC facilitator** will inform your table of the letter and submit your 5-word response.

## Table Talk Instructions



# HOW DOES AI ANALYZE ITS SWOT?

Here's a SWOT analysis for the use of AI performed by ChatGPT:



# HOW CAN WE USE AI RESPONSIBLY?

---



**The 2030 Agenda - our global blueprint for peace and prosperity on a healthy planet - is in deep trouble. AI could help to turn that around. It could supercharge climate action and efforts to achieve the 17 Sustainable Development Goals by 2030. But all this depends on AI technologies being harnessed responsibly and made accessible to all.**

**António Guterres**  
United Nations  
Secretary-General

# GEN AI FOR THE GLOBAL GOALS

The Private Sector's Guide to Accelerating Sustainable Development with Technology



accenture



# RESPONSIBLE AI USE

---



**THANK  
YOU**



[www.fssc.com](http://www.fssc.com)



[questions@fssc.com](mailto:questions@fssc.com)



Foundation FSSC



+31 (0) 183 64 50 28